

Getting started with CapTemp

First steps for using Poseidon units with CapTemp and MonTemp

All of the following functions can be tested using the free demo version of CapTemp that is limited to 21 days of unrestricted use.

For testing, you can use our Poseidon units available online. For their IP addresses, see [HW group: Sitemap > Online Demos](#).

This “Starting Guide” will help you start using CapTemp quickly by guiding you through the following steps.

- Basic Poseidon configuration
- Setting up CapTemp
- Adding a Poseidon unit to CapTemp
- Measuring values
 - Configuring individual alarms
- Processing captured readings with MonTemp
 - Displaying the data
- More information about CapTemp and MonTemp

Note: MonTemp is a freeware part of CapTemp. It is intended for reviewing and editing the measured data, or retrieving data from a Poseidon 2251.

TIP: Watch a Flash video with this guide.



Click to play
Starting Guide

The video is available on the Poseidon Setup CD, and at the [HW group website](#).

Short CapTemp video available [here](#):



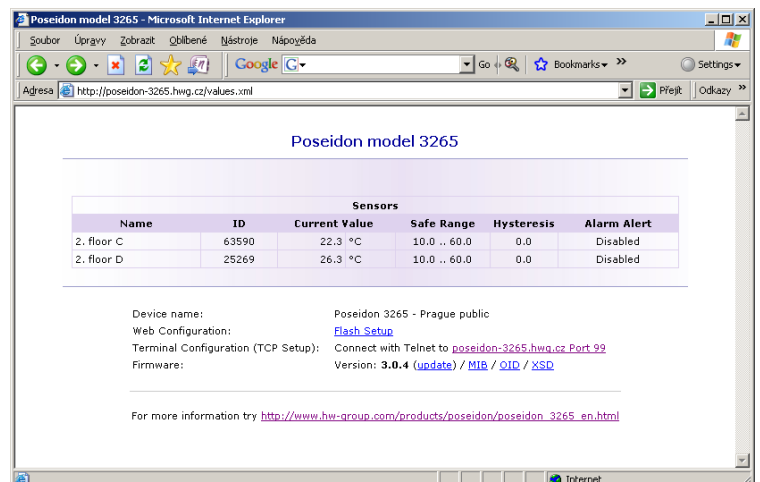
Click to play
flash video preview..

Basic Poseidon configuration

The Poseidon unit that CapTemp will retrieve readings from must have a correct IP address and at least one connected sensor. To verify, open its IP address in your browser.

This guide uses a Poseidon 3265 unit located at the Prague office of HW group. It is available at <http://poseidon-3265.hwg.cz> or 80.250.21.85.

For details about individual Poseidon models, see the **Poseidon XXXX** comparison at: http://www.hw-group.com/products/poseidon/poseidon_xxxx_en.html



Poseidon model 3265

Sensors					
Name	ID	Current Value	Safe Range	Hysteresis	Alarm Alert
2. floor C	63590	22.3 °C	10.0 .. 60.0	0.0	Disabled
2. floor D	25269	26.3 °C	10.0 .. 60.0	0.0	Disabled

Device name: Poseidon 3265 - Prague public
 Web Configuration: [Flash Setup](#)
 Terminal Configuration (TCP Setup): Connect with Telnet to poseidon-3265.hwg.cz:Port_99
 Firmware: Version: [3.0.4 \(update\)](#) / [MIB](#) / [OID](#) / [XSD](#)

For more information try http://www.hw-group.com/products/poseidon/poseidon_3265_en.html

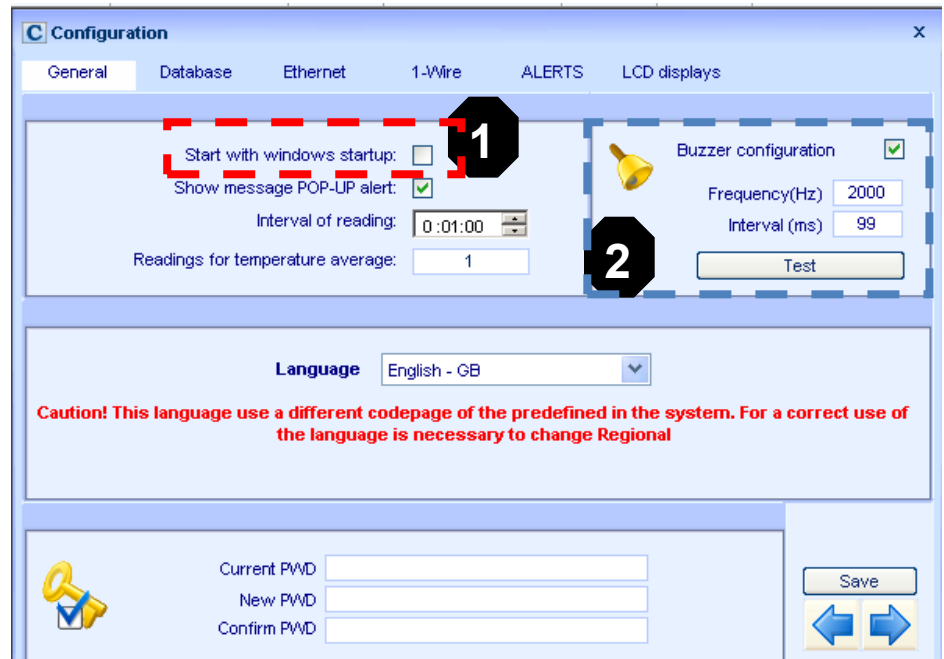
Setting up CapTemp

Upon launching the program, the installation wizard appears and helps you configure the program.

Installation wizard – General configuration

To enable full functionality, several further details need to be configured.

- We recommend to check the “**Start with windows startup**” box **(1)** so that CapTemp starts whenever you log in to your computer.
- If you want to be notified about alarms with warning messages, leave the “**Show message POP-UP alert**” box checked.
- If you want to use audible alarm, configure it in the appropriate section **(2)**. We recommend to keep the default settings.
- To increase security, access to CapTemp can be password-protected.
- Click the “**Save**” button to save your changes and use the right arrow to switch to the “**Alarms**” tab.



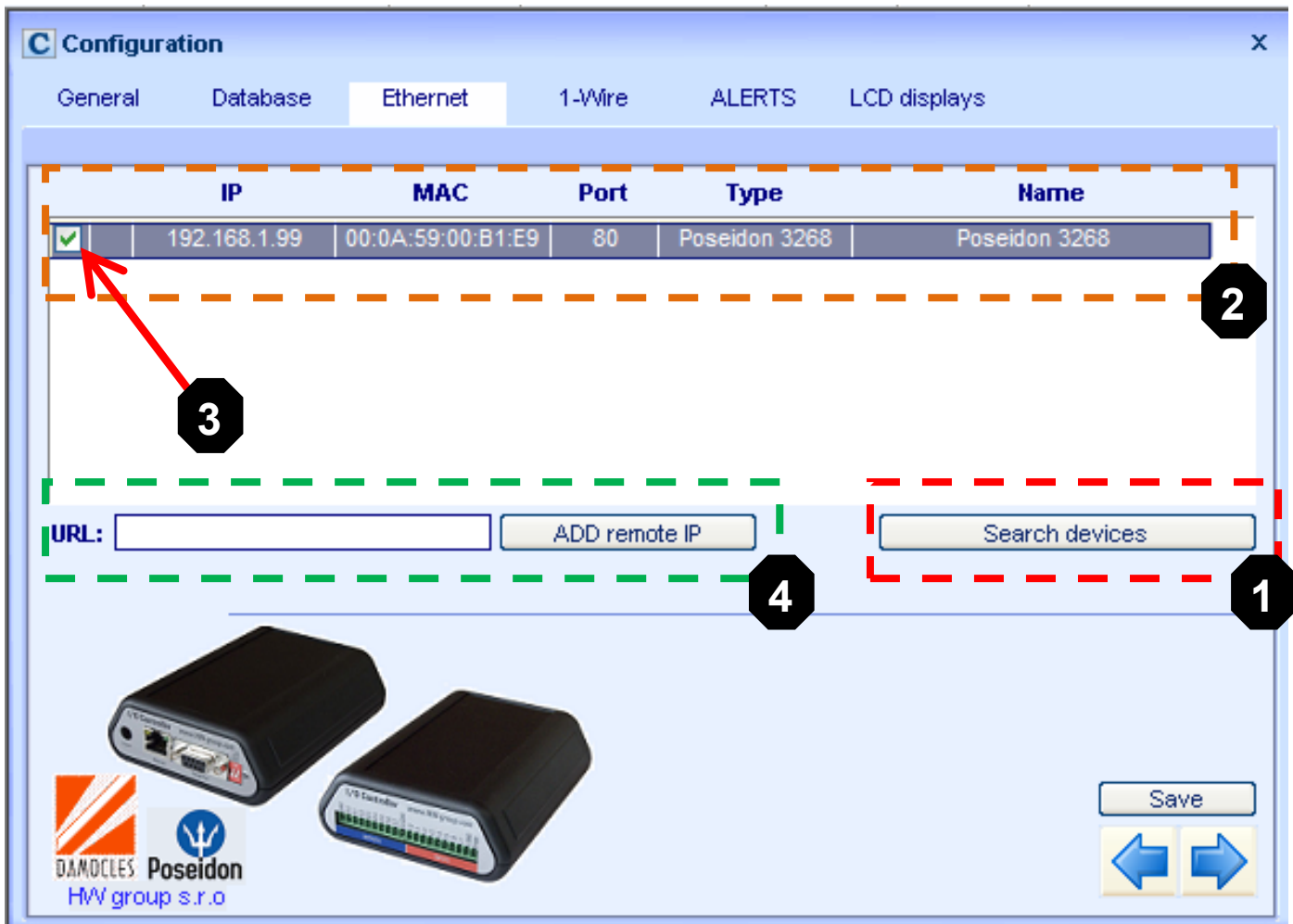
- The “E-mail” tab is used to configure the e-mail addresses for alerting to alarms and other error conditions, and to configure access to the mail server.


The screenshot shows the 'Configuration' window with the 'E-mail' tab selected. The 'E-mail' section is divided into two parts. Part 1, marked with a red dashed box and a '1' in a black circle, includes the SMTP Server (77.87.232.5), Sender E-mail (captemp@hwg.cz), User, and Password fields. Part 2, marked with a blue dashed box and a '2' in a black circle, includes three E-mail address fields (E-mail 1: matejka@hwg.cz, E-mail 2, E-mail 3) and a 'Text for Test' field containing 'Test message from CT' with a 'Send...' button. A 'Save' button and navigation arrows are located at the bottom right.

- In section **(1)**, enter the following:
 - Fill in the address of your SMTP server, including a username and a password if required (ask your network administrator or ISP for more details).
 - In the “**Sender E-mail**” field, fill in the e-mail address *from which* you want to receive the e-mails (ask your network administrator or ISP for more details).
- In section **(2)**, in the “**E-mail 1**” through “**E-mail 3**” fields, enter the e-mail addresses to which the e-mails should be sent.
 - Click “**Send...**” to send a test e-mail with the contents of the “**Text for Test**” field sent as the message subject.
- Click “**Save**” to save your changes.

Adding a Poseidon unit

CapTemp can automatically detect Poseidon and Damocles units on your local network, or you can add the units using their IP addresses.



- Click the “**Search Devices**” button **(1)** to automatically detect Poseidon and Damocles units connected to the same LAN as the PC running CapTemp.
 - All discovered devices appear in section **(2)**.
 - Double click to check the box **(3)** next to the device that you want to use in the program.
 - Click “**Save**”.
- To add a device outside of your local network (not found automatically), enter its IP address into the “**URL**” field (e.g. “poseidon.hw-group.com” for our online demo) and click “**ADD remote IP**” to confirm **(4)**.
 - The discovered device appears in section **(2)**, check **(3)** to select it.
 - Click “**Save**”.
- Click  to close the wizard.

Measuring values

When launched, CapTemp automatically reads all sensors connected to the selected Poseidon and Damocles units. This automatic detection is performed every time the program starts.

- Click  in the program toolbar to switch from the STOP mode to the **RUN** mode.


- ### Configuring sensor names and Single Alarm

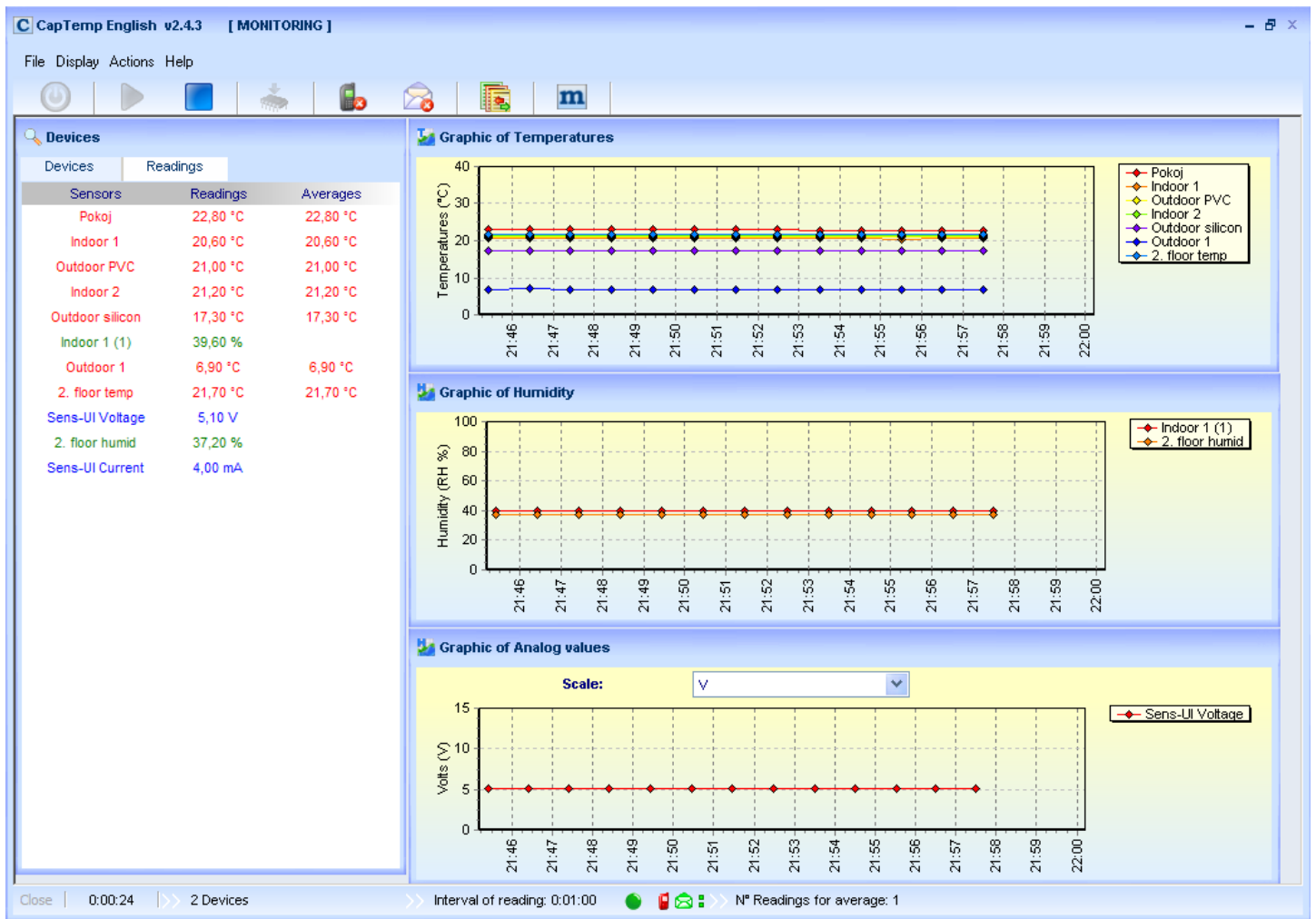
Configuring reactions to individual sensors, enabling and disabling

- In section **(1)** displaying available units, click one of the units.
- A list of sensors **(2)** connected to the unit displays to the right of the list of units **(1)**. Outputs and Dry Contact inputs are listed separately.
- In section **(2)**, select a sensor to configure alarm thresholds for. Further options are displayed in the section on the right **(3)**.

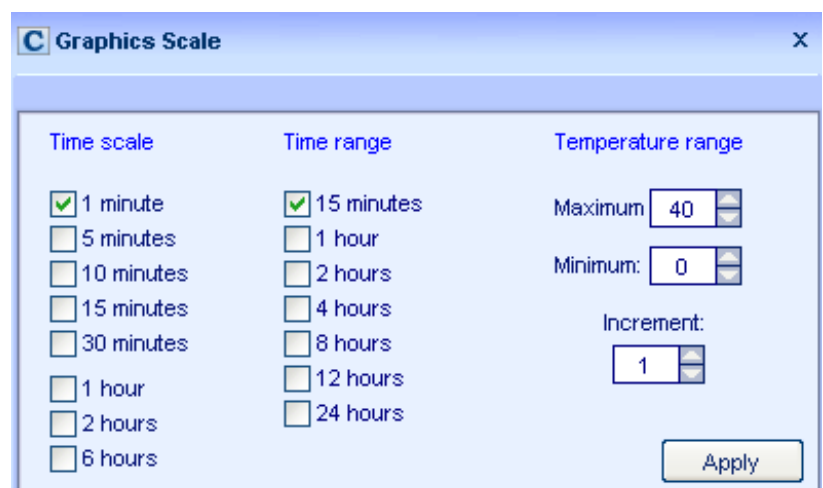
Note: Detailed setting of alarm alerting is described on page 7.

- **Displaying the readings and commencing work**

In the left-hand side of the program toolbar, click the  button to switch from the RUN mode to the **MONITORING** mode.




- As soon as the monitoring starts, graphs with measured values appear.
- To position graphs on the screen automatically, select the following menu option: **Display > Resolution > Auto adjust windows.**
- To change the parameters of displayed graphs, select the following menu option: **Display > Graphs > Settings**



E-mail alert to alarm from a sensor

- In the sensor configuration window, you can set the low and high threshold **(1)**. You will receive a notification whenever a threshold is exceeded.
 - The thresholds are shared by both Single and Global Alarm.

- Single Alarm reaction can be configured directly in this window **(1)**
- **Single Alarm reaction**
Click the “**Edit**” button **(2)** in the appropriate line (reaction to **Minimum** or **Maximum** being exceeded).

- Select the SMS – E-mail tab **(3)**.
- Click the  icon **(4)**.
- In the window that appears, click “**New**”.
- In the new window, enter the recipient’s name and e-mail, and click “**Add**” to confirm. Repeat to add more recipients.
- Check to select more recipients (at most three at once).

- Click “**Save**” to confirm the settings and close. If the e-mail is configured correctly, “**E-mail**” appears in the field next to the “**Edit**” button.
- Repeat the procedure for all sensors that you wish to configure Single Alarm for. Always click “**Save**” after making a change.
 - If you have many sensors, consider using the General Alarm e-mail alert and specifying only the thresholds for individual sensors.

Note: *When a new Poseidon unit is detected, the thresholds are copied from its “Safe Range” settings. Therefore, it is recommended to preset the thresholds before adding the unit to CapTemp.*

CapTemp modes

- **STOP**

The program is stopped, data are not captured.
You can configure or exit the program.

- **RUN**

The program is stopped, data are not read from the sensors, sensors are initialized.
You can configure the program but cannot exit it. To exit, you must switch to the STOP mode.

- **MONITORING**

The program is running, data are captured.
Captured data can be plotted in a graph.
You cannot exit the program. To exit, you must switch to the STOP mode.

Alarms in CapTemp

CapTemp contains three independent alerting systems that can be combined:

- **Global Alarm**

Global Alarm warns about a sensor being disconnected, or a value being outside of a specified range.
This group is enabled globally for the entire program. It is best characterized by the “exclamation mark” popup window option.

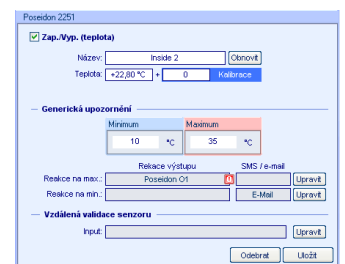
- **Single Alarm**

This alarm can be triggered by each individual sensor. It is configured in the tab corresponding to the sensor, together with the action to perform if the reading exceeds a threshold.
Available actions include controlling an output, sending an e-mail, or sending a text message (SMS).

- **Rules & Conditions**


A system of rules that supports complex reactions to individual stimuli.

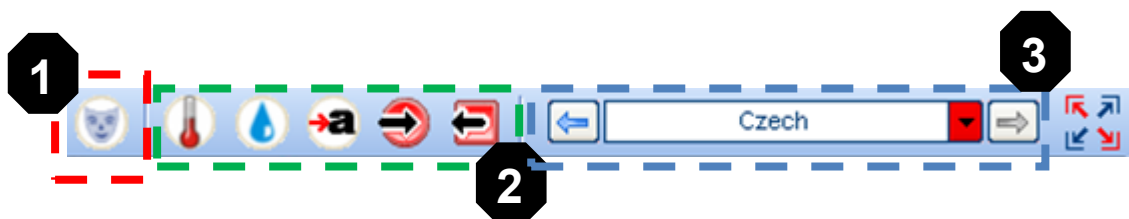
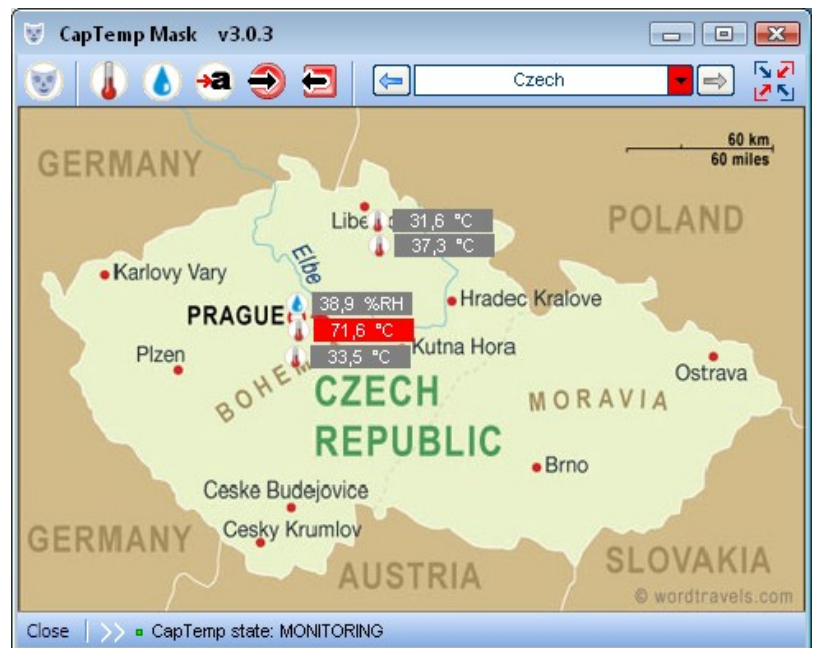
For example, one can turn on a warning light indicating that a cooler door has been open for more than 5 minutes, and, after three more minutes, sound a bell.



CapTemp Mask


Program CapTemp Mask makes monitoring values on map background easier.

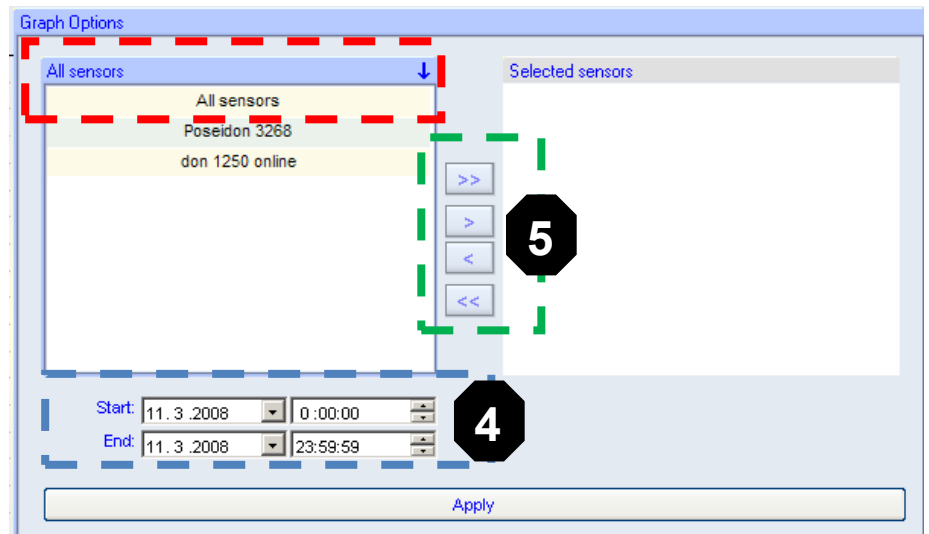
- **Stand-alone application** which is a part of CapTemp application.
- CapTemp Mask can be launched in the CapTemp Menu, or you can use the following icon in the CapTemp toolbar: 
- CapTemp Mask can **display a map** of the monitored object and place sensors in it
- Supported **background** formats are **JPEG, BMP** and **GIF**
- Displays actual values from selected sensors
 - Values out of the preset range are red blinking
- It is possible to **monitor more map backgrounds** at the same time and easily switch between them
- **Inserting a map background and sensors:**
 - To insert background as a picture click: **Edit masks > New (1)**
 - You can insert sensors and outputs / inputs by clicking icons in toolbar **(2)**
 - **Temperature**
 - **Humidity**
 - **Digital input (dry contact)**
 - You can easily switch between different backgrounds **(3)**



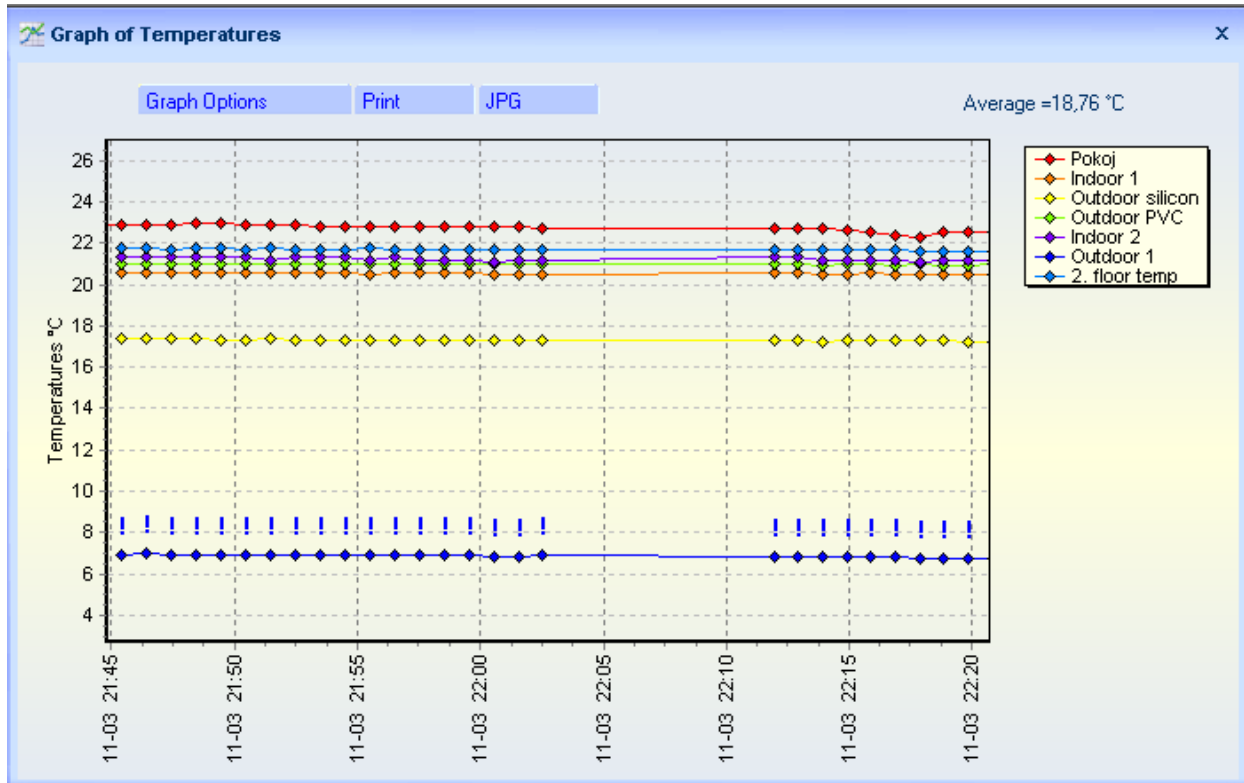
Processing captured readings with MonTemp

The CapTemp package includes the stand-alone MonTemp utility that can process the captured values and generate reports, e.g. for the purpose of data analysis, HACCP certification, etc.

- MonTemp has its own icon in the Start menu, or you can use the following icon in the CapTemp toolbar: 
- Data can be displayed in a graph or in a table.
 - To display a graph, select the quantity that you want to graph in the “**Graphs**” menu. In the submenu, select graph type (usually “Graphs → Temperature → Reading”).
 - In the “Graph Options” menu, select, by device, the sensors to graph **(3)**.
 - Select the time period to display **(4)**.
 - Make your selection by double-clicking a sensor, or by using the arrows **(5)**.
 - Click “**Apply**” to confirm your selection.



- Displayed data can be printed (**Print**) or exported as a JPEG image (**JPG**) into the directory specified in the configuration.

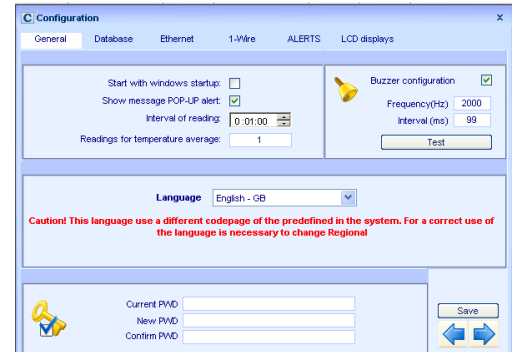


- Similar procedure can be used with any graph or table.
- Double-click an exclamation mark in the graph to add a comment.

Average temperatures

CapTemp calculates average temperature values. The number of values to include in the calculation is specified in: Configuration > General > Readings for temperature average

Averages are calculated while capturing – one value for every X samples. For example, when reading a value every minute and using 3 samples to calculate the average, the average is calculated every 3 minutes.



Histogram

The histogram displays the frequency of occurrence of individual values in the measured data sample.

