

# I/O Controller 1204

RS-232/485 serial port, 12 input contacts, 4 outputs, Ethernet

I/O Controller 1204 connects a serial port, twelve digital inputs for contact and four outputs to an Ethernet network over TCP/IP. Whenever an input contact state changes, I/O Controller sends a change notification within 200 ms.

Serial port, inputs and outputs are controlled with a TELNET-like M2M protocol (extended NVT – RFC2217). I/O Controller supports TCP server and TCP client modes. The protocol is fully documented. Use the Hercules terminal SW for testing.

- ✓ Redirect the I/O Controller serial port to a **virtual serial port** (e.g. COM27) on any networked PC. The **HW VSP** application for Windows is supplied free of charge.
- ✓ Accelerate your deployment with many examples for various programming languages in the **HWg SDK** (Borland C++ Builder, MS Visual C, VB, Delphi, C#, PHP, JAVA).

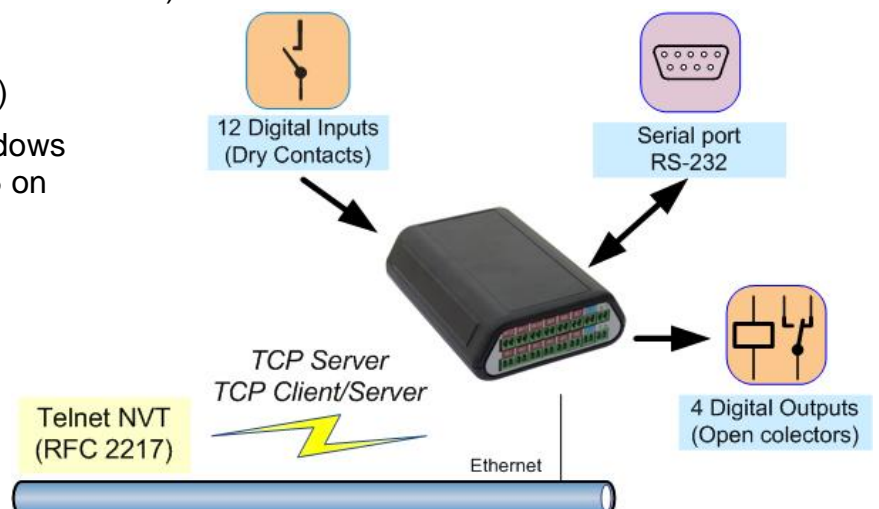


## Applications

- Link up to twelve buttons with a SW application.
- Easily connect a serial printer output to an IP network (LAN / WAN).
- Control a horn or an alarm signal using the outputs that can be boosted with external relays.

## I/O Controller 1240 – Main features

- 12 binary inputs (for contacts / pushbuttons)
- Serial RS-232/RS-485 port
- 4 binary outputs (open collector)
- Virtual serial port driver for Windows lets you easily have e.g. COM 5 on your PC

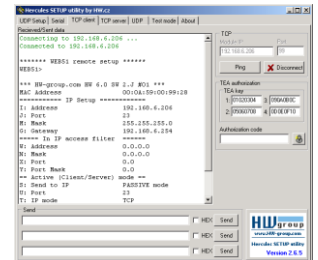


## SW applications

- **Virtual Serial Port**  
HW VSP (Virtual Serial Port) creates a virtual COM port on your PC  
Operates as a NT service (can be used on a Windows server as well).
  - **HW VSP Single licence** for Windows 2000/XP/Vista is free.
  - **HW VSP Multi licence** creates up to 64 virtual ports on a single PC and ties them with up to 64 I/O Controller and/or PortStore units.



- **Hercules** – Handy debugging and testing utility, I/O support
- **HWg IPRC cmd** – Command-line control of outputs

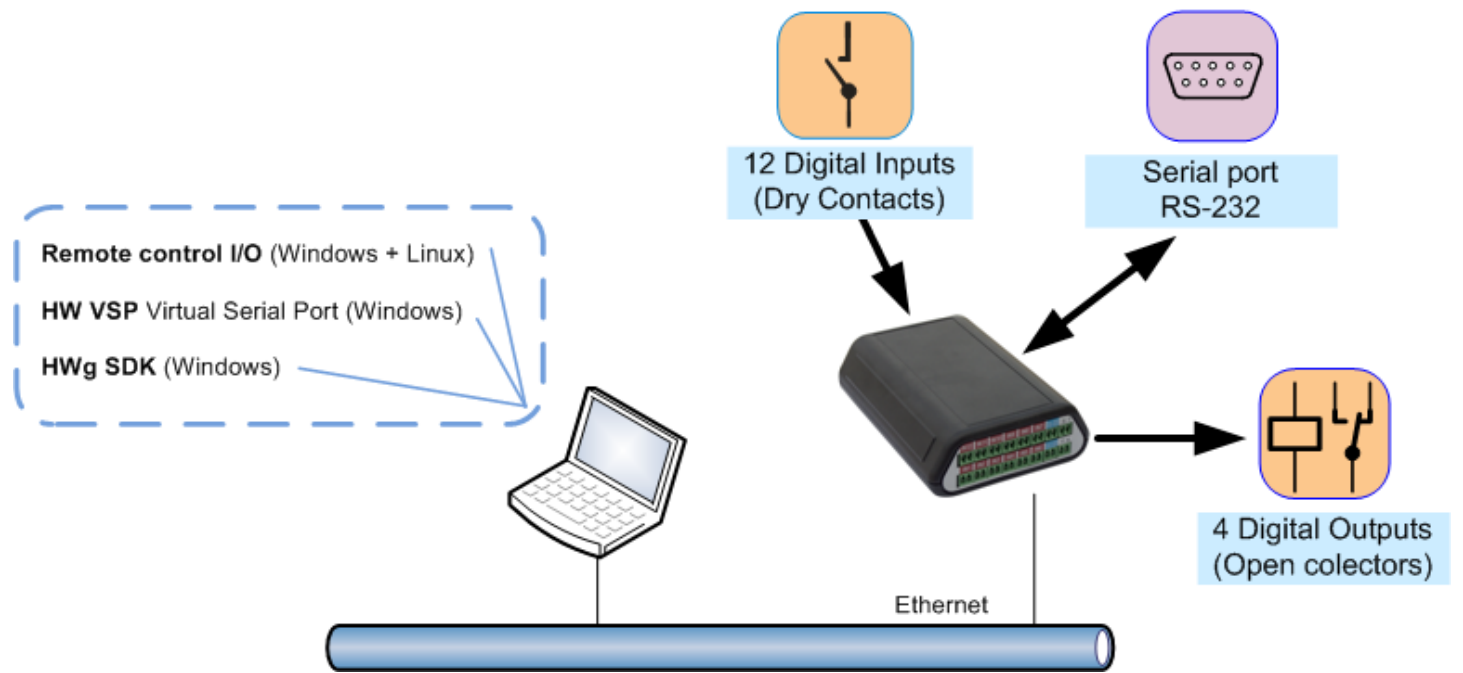


- **HWg SDK examples**  
Software Development Kit is available for download free of charge.
  - EX01: UDP Setup (Borland C++ Builder, MS Visual C, VB, Delphi, C#)
  - EX02: I/O Controller (Borland C++ Builder, MS Visual C, VB, Delphi, C#)
  - EX24: I/O Controller 1204 inputs (Borland C++ Builder, VB)
  - EX03: Control Remote Serial Port (Borland C++ Builder, MS Visual C, VB, Delphi, C#)
  - EX13: TCP Setup (Borland C++ Builder, MS Visual C, VB, Delphi, C#)

Technical specifications	
<b>Ethernet</b>	RJ 45 – 10BASE-T / 10 Mbps
+ Protocols	TCP/IP, UDP/IP, Telnet+RFC2217
+ Modes	TCP Server, TCP Client/Server, UDP (serial port only)
+ Security	Authorized IP range / TEA (128B) authentication
+ Configuration	RS-232 Setup (9600 8N1) Telnet Setup (over IP, port 99) UDP Config (over IP, UDP broadcast, Hercules / UDP Config utility)
<b>Serial port</b>	RS-232 (Cannon DB9M – RxD, TxD, CTS, RTS, GND) RS-485 (Cannon 9, pins 1 (A) / 9 (B) )
<b>Inputs</b>	12 contacts (digital inputs, 1= 0 Ω to 120Ω)
<b>Outputs</b>	4 outputs (darlington transistors) open collector, common ground, max. 50VDC / 0.5A, max. 2W total
<b>Power</b>	8–24VDC / 0.25A (barrel connector, terminal block)
+ Dimensions / Fixing	39 x 97 x 128 [mm] / wall mount or free standing
<b>Conditions</b>	Operating: -10°C .. +60°C / 10 %RH .. 80%RH

Product ordering numbers		
<b>600 307</b>	<b>I/O Controller 1204</b>	I/O Controller 1204 unit only, no power adapter or cables.
<b>600 291</b>	<b>I/O Controller PL</b>	I/O Controller (8/8 I/O) unit only, no power adapter or cables.
<b>600 292</b>	<b>I/O Controller PL SET</b>	Recommended set for getting started with the standard I/O Controller (8/8 I/O). Contains: I/O Controller, power adapter, cables, CD, etc...

### M2M mode



### Box-2-Box mode

