

Starting Guide – PortStore4

Start collecting data from PBX and iPBX using PortStore4

1) Connecting PortStore4

Device status:

- Power / Boot (green)
- Buffer data transmission (red / green)
- System in config (green)
- Battery (red)

USB interface

Connect a Flash disk to upgrade FW

Power: 9 to 12V

Ethernet connector – 100 Mbps

Green LED: power; yellow LED: Link/Activity

Serial 1 and Serial 2 – serial ports to connect to PBX

Port use is configured over WWW

Indication of RS-232 data transfer (green = receive, red = transmit)



Battery warning

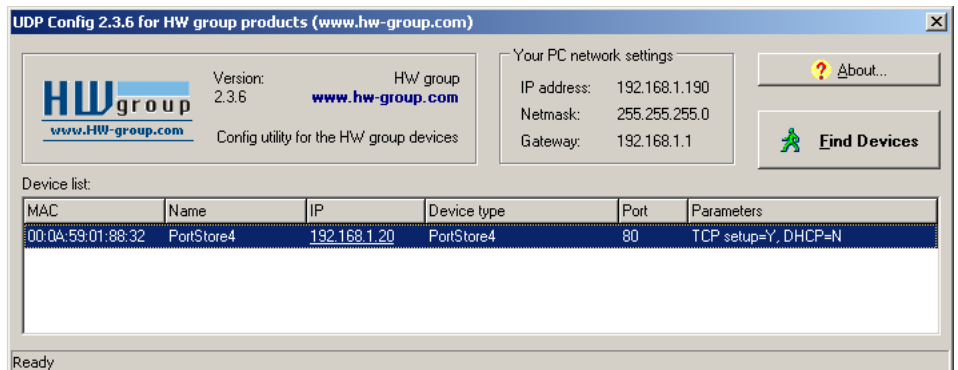
Charge the internal battery (connect the power for 12 hours), otherwise you risk loose captured data during power-failure.

2) Configuring the IP address – UDP Config

UDP Config utility – root directory of the supplied CD (Windows and Linux versions).

Also available for download at www.HW-group.com – [Software](#) -> [UDP Config](#).

- Click the icon to launch **UDP Config**. The program automatically looks for connected devices.
- To search for devices, click the **Find Devices** icon.



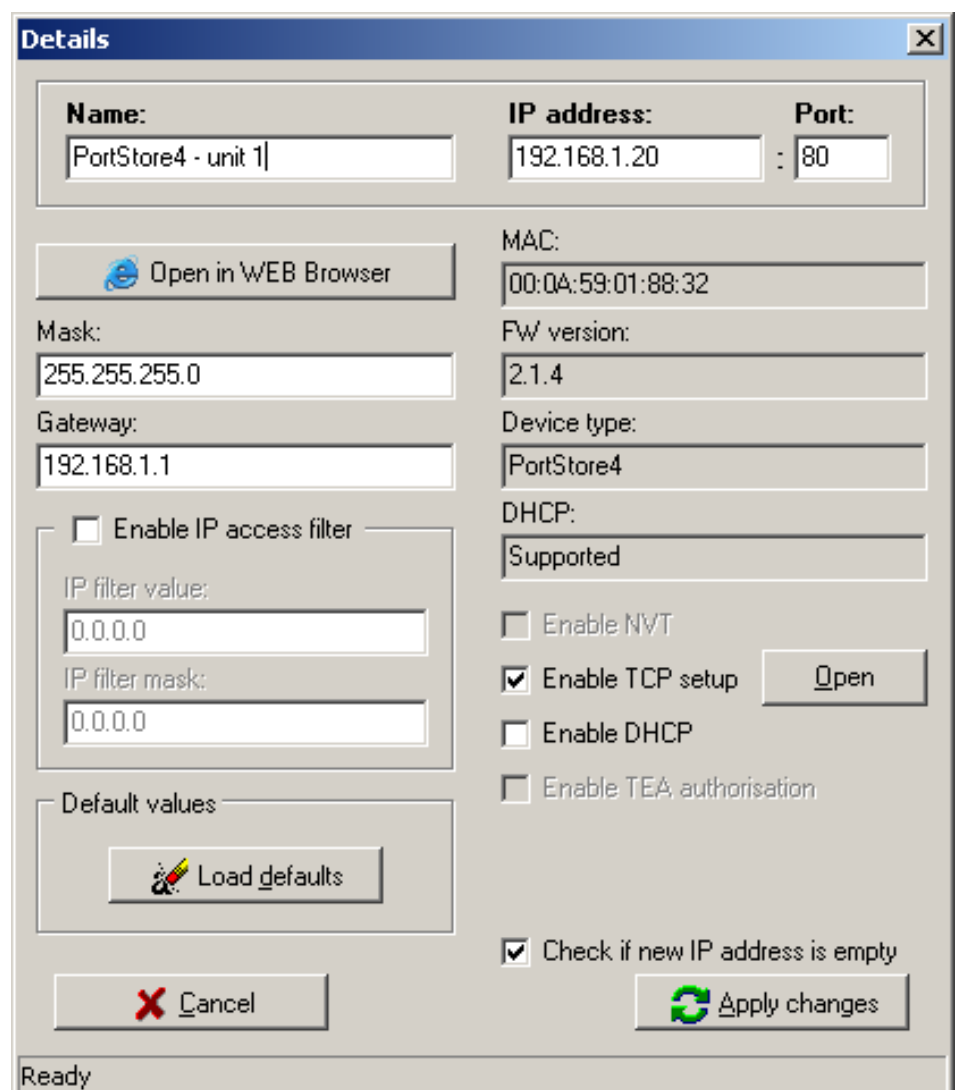
The program searches for devices in your local network. To identify a particular PortStore4 unit, look at the MAC address on the label at the bottom of the device.

Double-click a MAC address to open a basic configuration dialog.

Configure network parameters

- IP address / HTTP port (80 by default)
- Network mask
- Gateway IP address for your network
- Device name (optional)

Click the **Apply Changes** button to save the settings.



3) Configuration in a Web browser

Type the IP address of the device in your browser's address bar, or run **UDP Config** and double-click the IP address in the list of discovered devices.

Device configuration
Default login: "user1" / "pass1"
Warning: Login is case sensitive!

Main Menu
PortStore4
Status
Setup - Login
www.hw-group.com
Version: 138.214

Status

Basic Information

Product	PortStore4
Device name	PortStore4
Firmware file	ps4_hpwd_138_214.bin
Version	138.214
Board BIOS ver.	1076
Hardware revision	1

Network

DHCP	disabled
MAC address	00:0A:59:01:88:32
IP address	192.168.1.20 <i>Manually configured</i>
Network mask	255.255.255.0 <i>Manually configured</i>
Gateway	192.168.1.1 <i>Manually configured</i>
DNS primary	213.46.172.37 <i>Manually configured</i>
DNS secondary	212.47.1.4 <i>Manually configured</i>

Buffer

Status	Ready
Size	32 <i>MB</i>
Used	11 <i>bytes</i>
Input	Serial1 <i>115200, 8None1, None</i>
Output	FTP_server <i>port 21, active</i>
Type	Linear

Time

Time	14:24, Jan 11 1970 <i>Current time</i>
Synchronization	no sync. <i>Last sync with NTP server</i>

System Log

Refresh

Data input to the buffer

Data output from the buffer

List of events

Basic device information

Network config overview

After entering the default username and password ("user1" / "pass1"), a detailed menu appears on the left.

PortStore4 - Microsoft Internet Explorer

Soubor Úpravy Zobrazit Oblíbené Nástroje Nápověda

Zpět Adresa <http://192.168.1.20/home.asp?glang=en> Přejít Odkazy >>

PortStore 4

Main Menu

- PortStore4
- Status
- Setup
 - General
 - Network Setup
 - Buffer
 - Inputs
 - Serial 1
 - Serial 2
 - TCP Server
 - TCP Client
 - TFTP Server
 - Outputs
 - FTP Server
 - TCP Server
 - TCP Client
 - E-mail
 - VSP
 - TCP Setup
 - E-mail
 - Time
 - Security
 - User 1
 - User 2
 - System

www.hw-group.com

Version: 138.214

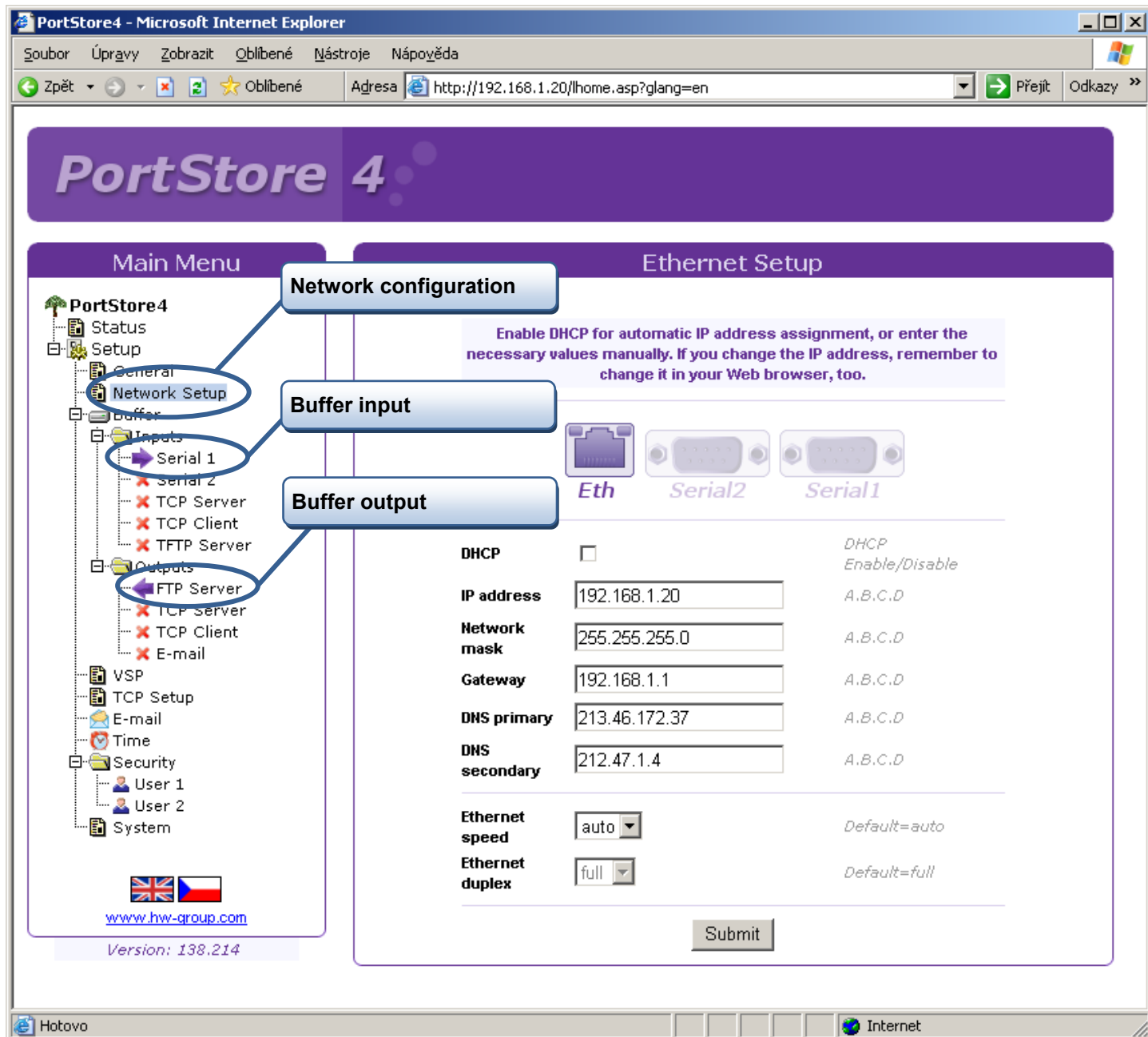
General Setup

Enter device name. It is used for identification if you use more devices in your network.

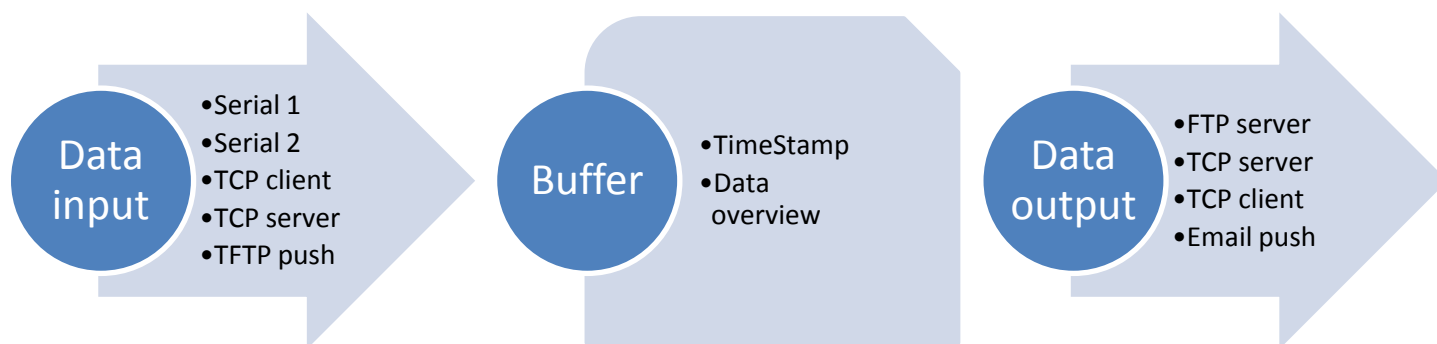
Device name 1 to 20 characters

Language selection:

Firmware version: 138.214



Data processing



The screenshot shows the PortStore4 Buffer Setup configuration page. The browser window title is "PortStore4 - Microsoft Internet Explorer" and the address bar shows "http://192.168.1.112/home.asp?glang=en". The page has a purple header with "PortStore 4" and a "Main Menu" on the left. The "Main Menu" tree includes: Status, Setup (General, Network Setup, Buffer, Inputs, Outputs), FTP Server, VSP, TCP Setup, e-mail, Alerts, Time, Security, User 1, User 2, and System. The "Buffer" item is circled in blue. The "Data e-mail" item in the "Outputs" section is circled in purple. The "Buffer Setup" page contains a "Buffer" section with "In" (Serial2) and "Out" (Data E-mail) dropdowns. Below is a "Time Stamp Trigger" section with "Type" (Linear), "Filename" (default.dat), "Time stamp trigger mode" (Off), "string" (Add trigger string...), and "End of line" (none). A "Submit" button is at the bottom. Annotations include: "Buffer function config" pointing to the Buffer menu item; "Configured buffer input" pointing to the Serial2 dropdown; "Configured buffer output" pointing to the Data E-mail dropdown; and "Purple indicates active selection" pointing to the Data e-mail menu item. The footer shows "www.hw-group.com" and "Version: 160.218".

First test – Serial > FTP

Use the **PortStore2 Configurator** utility as a PBX emulator on your PC, send the data to PortStore4 serial port, and read it using the FTP function in Total Commander, or using any other FTP client.

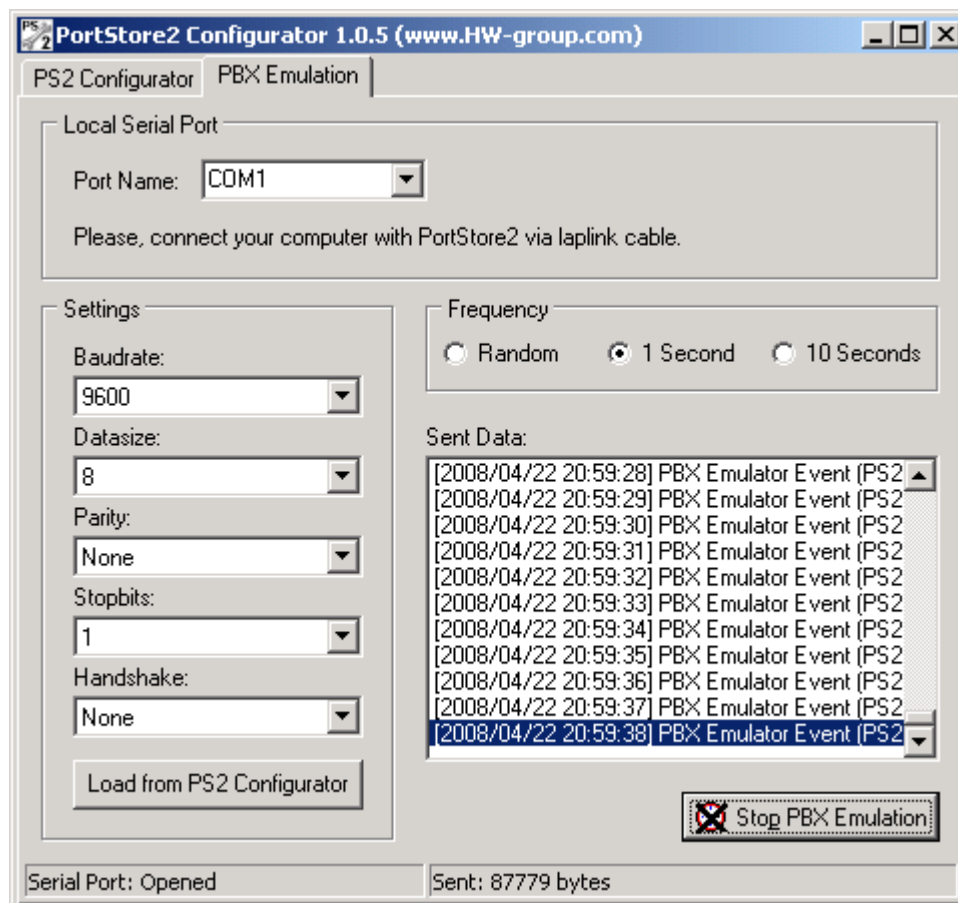
- **PortStore4 configuration**

- Buffer Setup tab > In: **Serial 1**
- Buffer Setup tab > Out: **FTP**
- Buffer > Inputs > Serial 1 tab: **9600 / 8 / N / 1**
- Buffer > Outputs > FTP server tab: **Port 21 / Active**
- Buffer > Outputs > **Username** tab: *George* / **Password**: *Orwell*



- **Start PortStore2 Configurator.**

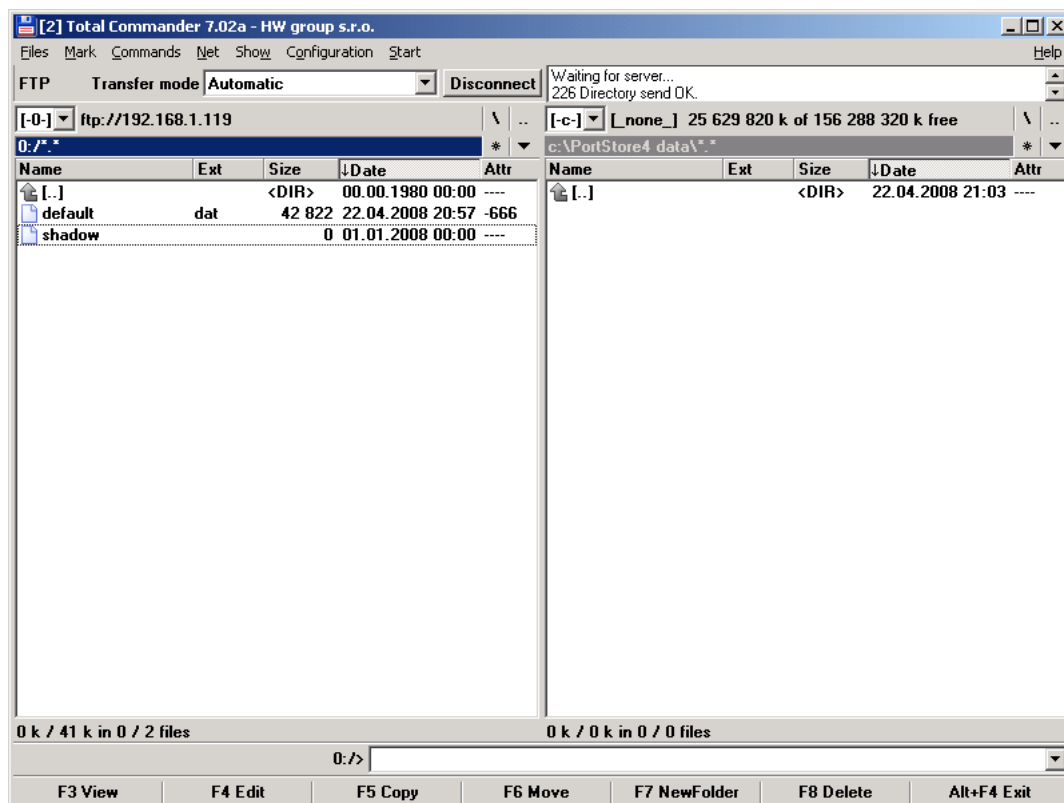
- PBX Emulation tab > select your PC's serial port
- PBX Emulation tab > set **9600 / 8 / N / 1 / Handshake: None**
- PBX Emulation tab > Frequency: **1 Second**
- PBX Emulation tab > **Start PBX Emulation** button



- Connect the PC serial port to PortStore4 – Serial 1 (LapLink cable)

• Connecting to PortStore4

- Buffer Status tab > Block: Buffer > Used **xxx** bytes
Check the volume of data received by the input buffer.
- Launch **Total Commander**
- Net menu > FTP New connection (CTRL-N)
- Turn off anonymous connection, enter PortStore4 IP address
- Fill in **Username: George / Password: Orwell** (Case sensitive..)
- Two files appear after connecting:
 - default.dat – size increases whenever the file list is reloaded (CTRL-R)
 - shadow – zero size



• Downloading data from PortStore4

- Copy the **default.dat** file (F5 Copy).
The file contains data received from the PBX emulator.
Note: The default.dat file has been copied and its size is now constant, does not increase any more. The shadow file starts to grow in size.
- Delete the default.dat file in PortStore4 (F8 Delete).
The contents of the shadow file move to default.dat, and a new shadow file with zero size is created. Default.dat again starts growing as data are coming from Serial 1.